

# LOT 152

TWO BEDROOM TOWNHOUSES  
ONE BEDROOM OPTION ALSO AVAILABLE

## Accommodation

- Hall
- Living and dining room
- Kitchen
- Laundry room
- Guest WC
- 2 bedrooms with en-suite bathroom
- Private terrace and garden
- Garage (2 cars)

## Specification

### Kitchen

- Wall and base units – laminate
- Work surfaces – stone composite
- Flooring – cast stone
- Bosch stainless steel appliances including:
  - Microwave oven
  - Main oven with auto clean
  - Ceramic hob with touch control
  - Extractor fan
  - Refrigerator
  - Dishwasher

### Bathrooms

- Bathroom suites by GSI, comprising:
  - Bath
  - WC
  - Bidet
  - Wash basin
  - Flooring – cast stone

### Miscellaneous

- Gas central heating
- Cable TV
- Security alarm
- Broadband Internet
- Pre-installation for air conditioning
- Communal swimming pool for each lot
- Automatic roof irrigation system



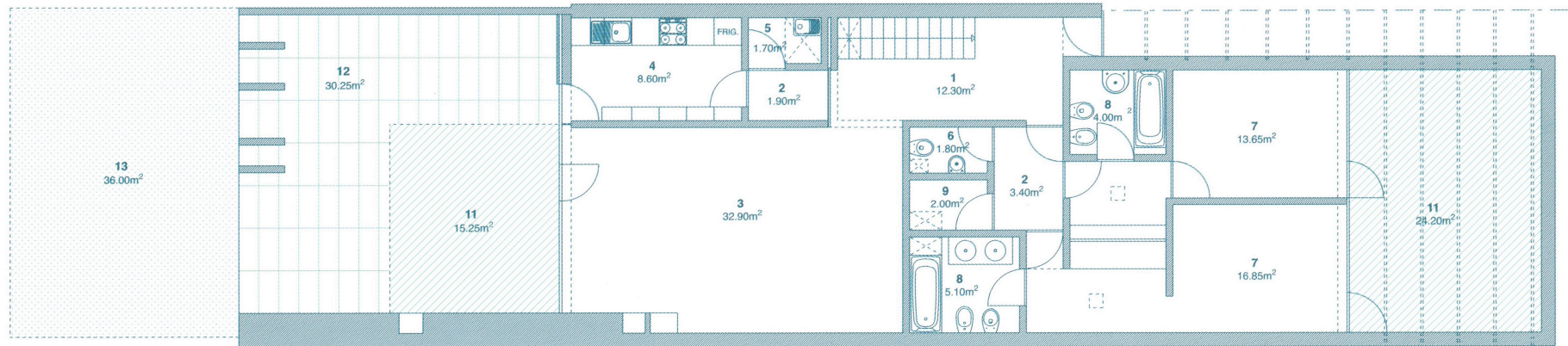
“All the properties will be lit naturally, either using skylights – in the interior areas – or large glass windows for private courtyards to the north and south sides. These courtyards will be covered with greenery.”

**Nuno Graça Moura**  
Architect

Details and specification may be subject to variation and photography is indicative.



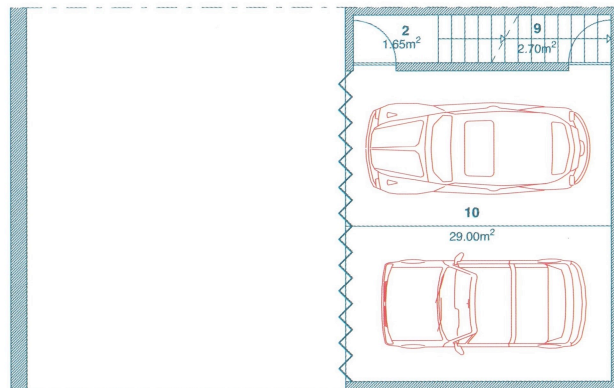
**LOT 152 – TWO BEDROOM TOWNHOUSES**  
 ONE BEDROOM OPTION ALSO AVAILABLE



PLANTA DO PISO 0



- 1. HALL
- 2. HALLWAY
- 3. LIVING AND DINING ROOM
- 4. KITCHEN
- 5. LAUNDRY
- 6. WC
- 7. BEDROOM
- 8. BATHROOM
- 9. STOREROOM
- 10. GARAGE
- 11. TERRACE
- 12. COVERED TERRACE
- 13. PRIVATE GARDEN



PLANTA DO PISO -1

